

Crane Merchandising Systems

Multi Language Product Configurator (MLC)



User Guide

Welcome to the Crane Merchandising System Multi-Language Product Configurator (MLC).....	3
Logging into the MLC.	3
Configuring a Machine.....	4
The Product Configurator Basket.....	8
Create a New User for an Existing Configurator Account holding company via the main online registration form	10
Create a New Configurator Company Account:	12
Guest User Access	15
Forgotten Password	15

Welcome to the Crane Merchandising Systems Multi-Language Product Configurator (MLC).

1. The MLC has been designed to make the process of ordering a vending machine from Crane Merchandising Systems as straightforward as possible.
2. If, after reading this guide, you would like more assistance then please contact your CMS Account Manager.

Logging into the MLC.

1. The CMS MLC can be found at the following web address:
<http://www.craneconfig.eu/>

CRANE MERCHANDISING SYSTEMS™
A Crane Co. Company

Product Configurator

Welcome to Crane Merchandising Systems Online

Please select your Country's flag to purchase equipment

UK Germany Spain Italy Turkey Russia

Get Adobe Reader

Note to Guest Users: The use of this tool does in no way bind you to any agreement with Crane Merchandising Systems, nor does a request received through the configuration tool constitute an order being placed. This tool is designed purely to make it easier for you to move through the process of purchasing a vending machine through Crane Merchandising Systems. Crane Merchandising Systems does not sell to end users, once your details have been received you will be advised that any firm order must go through an authorised reseller.

2. Select the relevant country flag.
3. If you already have a Configurator company account then complete the login form (shown overleaf):
4. To request a Configurator company account please proceed to the section “Create a new Configurator company account”
5. If you would like to add a new user to an existing Configurator company account then please proceed to the section “Create a new user for an existing Configurator account holding company”

Login

Existing Account Holders
 Guest Users

User Name :

Password :

[Click here to fill out an online account application form](#)

Forgotten Password?

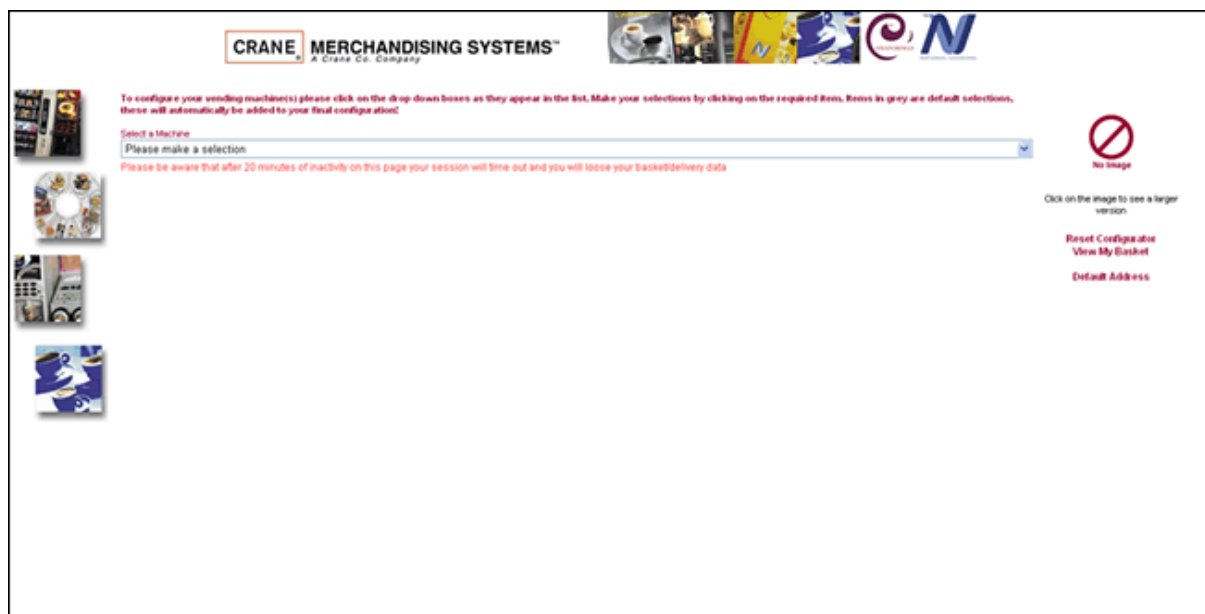
Please enter your email address and click enter and we will reset your password and send it to your email address.

Email Address :

- Once you have successfully entered your username and password you will be directed to the machine selection screen.

Configuring a Machine.

- The machine select screen, on entry, only displays the “Select a Machine” drop down box (See Below).



- Click on the arrow and you will see the full machine range available. For this example we will use the Evolution machine.

CRANE MERCHANDISING SYSTEMS™
A Crane Co. Company

To configure your vending machine(s) please click on the drop down boxes as they appear in the list. Make your selections by clicking on the required item. Items in grey are default selections, these will automatically be added to your final configuration.

Machine: Evolution

Ingredient Specification: Please make a selection

Door and Graphics colour: Please make a selection

Country: UK

User Interface: Please make a selection

Cold Specification: Please make a selection

Cup Size: Please make a selection

Credit System: Please make a selection

Notes:

Optional Extras (all at an additional cost):

- Cup platform (for using cups/mugs)
- Freewend/Jug key switch (for use with a jug)
- Hygiene kit
- MD@ communication lead
- Microwave Housing (Housing colour same as machine)

Water Filter: Please make a selection

Quantity: 1

Add To Basket

- Once any machine is selected it will activate the specific configurations from which you will be able to build up your required machine.
- Select your required Ingredient Specification, for instance, Bean 2 Cup.

CRANE MERCHANDISING SYSTEMS™
A Crane Co. Company

To configure your vending machine(s) please click on the drop down boxes as they appear in the list. Make your selections by clicking on the required item. Items in grey are default selections, these will automatically be added to your final configuration.

Machine: Evolution

Ingredient Specification: Bean 2 Cup Coffee, Freshbrew Coffee, Freshbrew Tea, Milk, Sugar, Chocolate, Topping, Coffee (Brochure Option 2)

Door and Graphics colour: Please make a selection

Country: UK

User Interface: Please make a selection

Cold Specification: Please make a selection

Cup Size: Please make a selection

Credit System: Please make a selection

Notes:

Optional Extras (all at an additional cost):

- Cup platform (for using cups/mugs)
- Freewend/Jug key switch (for use with a jug)
- Hygiene kit
- MD@ communication lead
- Microwave Housing (Housing colour same as machine)

Water Filter: Please make a selection

Quantity: 1

Add To Basket

- The next selection is the Door and Graphics options. When you make a selection here you will notice that the image will change to reflect the colour chosen. We have also created graphics exclusions – for instance you cannot select Bean 2 Cup graphics with an instant machine.

6. Work your way through the drop down menus, ensuring that you have made a selection from each menu, if a selection has not been made you will be prompted to complete any missing options when you select Add to Basket. Default options are in grey text, these cannot be selected or configured.
7. **Optional Extras:**
Where optional extras are available you can select them by checking the relevant boxes. Please note that all optional extras come at an additional charge.
8. **Water Filter:**
Please use this drop down menu to select your desired water filter. If you are in any doubt, select the recommended option or consult a member of our Customer Services team.
9. **Quantity:**
Enter the quantity of machines required in this box. The default is one. To change this number simply click in the box and add a new number.
10. The screen shot below shows a completed configuration (without any notes).

11. Add to Basket:

When you have completed your configuration, and you are sure that everything that you have selected is correct, click on the Add to Basket button.

12. Reset Configurator:

Selecting this option will reset the current configuration; it will not clear anything that you may have in your basket.

13. View My Basket:

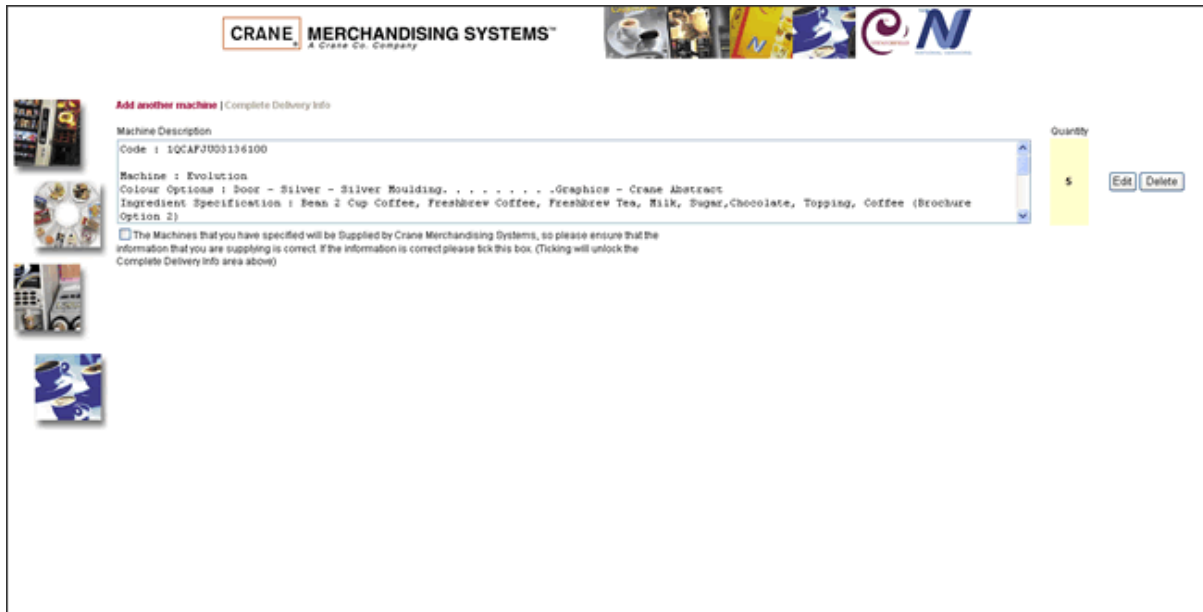
Selecting this option will display anything that you have previously configured and added to your basket.

14. Default Address:

If you select this option you will be able to assign an invoice address and up to five delivery addresses. These can be changed by you whenever you need to.

The Product Configurator Basket

1. When you have added your machine(s) to the basket you will be taken to the following screen.



2. The basket screen displays the machine that you have configured and the quantity required. From here you can also edit the configuration, delete the configuration, add another machine and complete the delivery information.

3. **Machine Description:**

This area displays the machine(s) that you have just configured in text format. You will also notice that it produces a code. This code is what Crane Merchandising Systems requires to identify the vending machine's configuration. This code is extremely important, as when we receive it, the machine will be built according to that code number.

4. **Quantity:**

This area displays the quantity of machines that you have ordered. There will be a separate quantity for each machine type.

5. **Edit Button:**

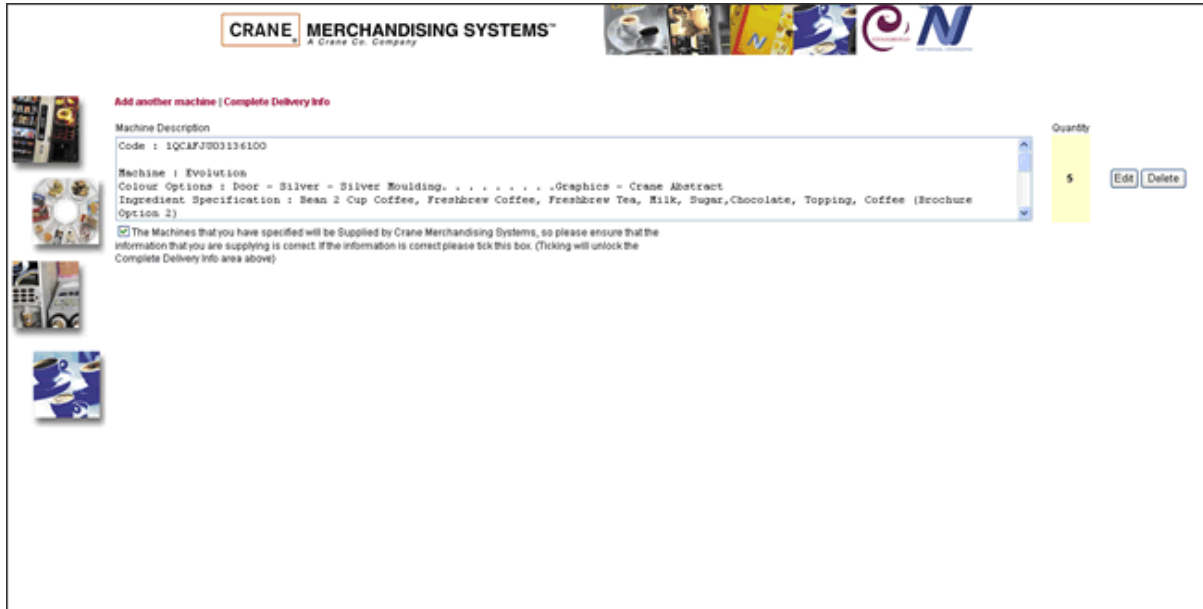
If you have made a mistake with the configuration, or simply change your mind, you can click the Edit button. This will take you back to that particular machine configuration within the main Configurator screen. Simply edit your selection and then click on the Update Basket button.

6. **Add another Machine:**

When you are in the basket you can add more machines at any time, these will just get added to your basket.

7. Complete Delivery Information:

When you are completely satisfied that the machines you have configured are correct, click on the tick box to confirm the configurations are correct, this will unlock the Complete Delivery Info area (See below).



The screenshot displays the 'CRANE MERCHANDISING SYSTEMS™' logo at the top, with the tagline 'A Crane Co. Company'. Below the logo is a navigation bar with several icons. The main content area is titled 'Add another machine | Complete Delivery Info'. It features a 'Machine Description' section with a text area containing the following information: Code: 1QC1FJ203136100; Machine: Evolution; Colour Options: Door = Silver = Silver Moulding,Graphics = Crane Abstract; Ingredient Specification: Bean 2 Cup Coffee, Freshbrew Coffee, Freshbrew Tea, Milk, Sugar, Chocolate, Topping, Coffee (Brochure Option 2). To the right of the text area is a 'Quantity' field set to '5' and 'Edit' and 'Delete' buttons. Below the text area is a checkbox with the text: 'The Machines that you have specified will be Supplied by Crane Merchandising Systems, so please ensure that the information that you are supplying is correct if the information is correct please tick this box. (Ticking will unlock the Complete Delivery Info area above)'. On the left side of the form, there are four small thumbnail images of coffee machines.

For Existing Customers this will take you to the online order and site survey forms.

For Guest users this will allow you to submit your configuration to Crane Merchandising Systems as an enquiry.

Create a new user for an existing Configurator account holding company

7. From the login screen (below) select "Click here to fill out an online account application form"

Login

Existing Account Holders
 Guest Users

User Name :

Password :

[Click here to fill out an online account application form](#)

Forgotten Password?

Please enter your email address and click enter and we will reset your password and send it to your email address.

Email Address :

8. Complete all the details below. The company account number must be included.

Product Configurator Registration

Do you have a Configurator account with Crane Merchandising Systems? Yes
 No










Company Account Number :

User Name :

Your email :

Confirm email :

I agree with the T's & C's :

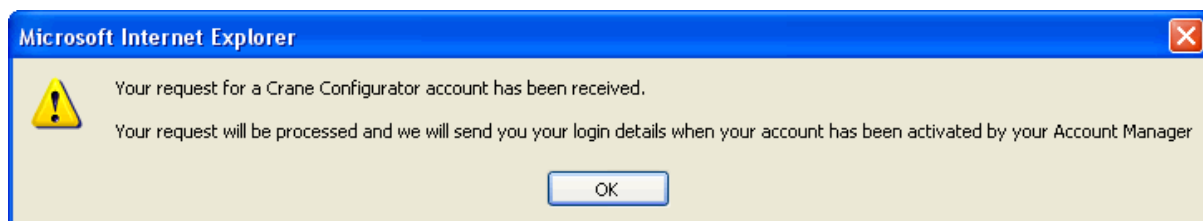
 <input type="checkbox"/>	 <input type="checkbox"/>	 <input checked="" type="checkbox"/>
 <input type="checkbox"/>	 <input checked="" type="checkbox"/>	 <input checked="" type="checkbox"/>
 <input type="checkbox"/>	 <input type="checkbox"/>	 <input type="checkbox"/>

Please click the three circles.

| [T's & C's](#) | [Privacy Policy](#)

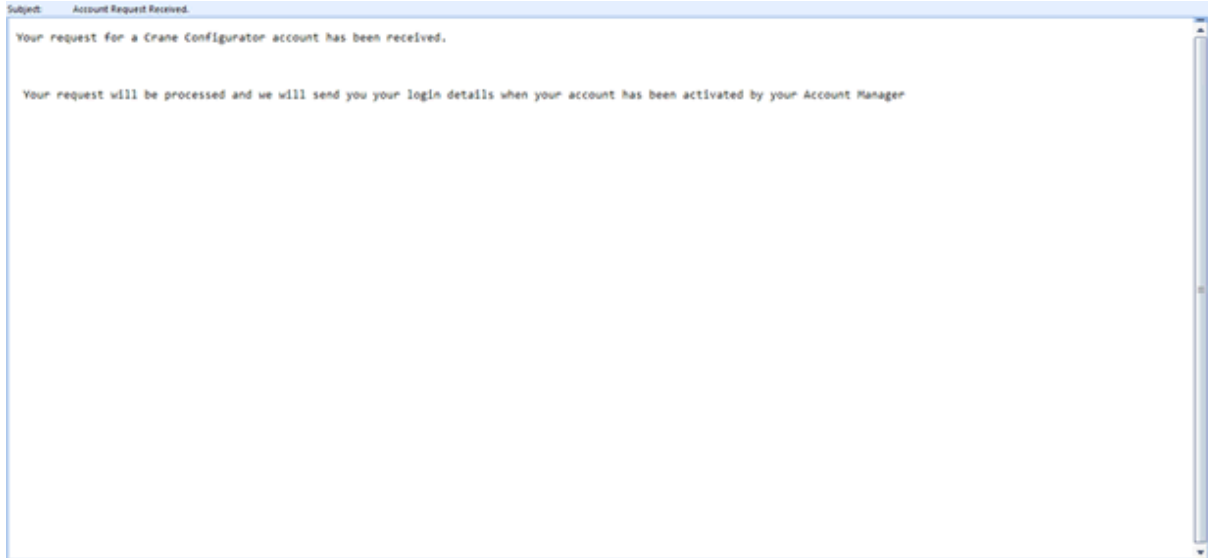
9. The image box (above) that contains circles, squares and triangles is a non-language specific CAPTCHA system⁽¹⁾ that we have developed at Crane Merchandising Systems. Simply follow the instructions – in this case click the three circles, once the check box has been ticked a red border will appear around the image selected.

10. Once you have selected the relevant images click on enter and you will get the following message.



¹ CAPTCHA stands for "Completely Automated Public Turing test to tell Computers and Humans Apart". This type of system helps to provide online forms protection from automated attacks.

11. Click on OK and you will be taken to the login page. Your CMS Account manager will receive notification to activate the account and you will receive an email to the address specified in the registration form which will contain the following: *“Your request for a Crane Configurator account has been received. Your request will be processed and we will send you your login details when your account has been activated by your Account Manager”*



Create a new Configurator company account:

1. From the Login screen select “Click here to fill out an online application form”
2. If you are a company that does not currently have a Configurator account with Crane Merchandising Systems you will need to select “No” to “Do you have a Configurator account with Crane Merchandising Systems?”
3. This will alter the registration form. See overleaf.

Product Configurator Registration

Do you have a Configurator account with Crane Merchandising Systems? Yes
 No

Company Name :

Company Address :

Company Postcode :

Company Tel No :

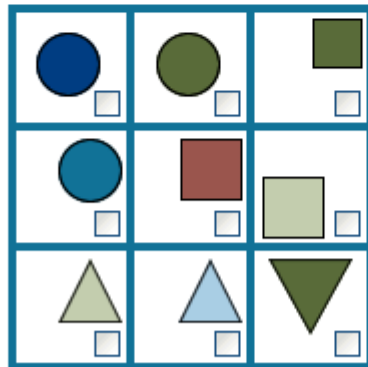
User Name :

Your email :

Confirm email :

Do you want PIN authorisation on this account? Yes
 No

I agree with the T's & C's :



Please click the three squares.

| [T's & C's](#) | [Privacy Policy](#)

4. Complete all of the form details and the CAPTCHA, then select "Enter". See overleaf.

Product Configurator Registration

Do you have a Configurator account with Crane Merchandising Systems? Yes No

Company Name :

Company Address :

Company Postcode :

Company Tel No :






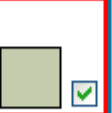



User Name :

Your email :

Confirm email :

Do you want PIN authorisation on this account? Yes No

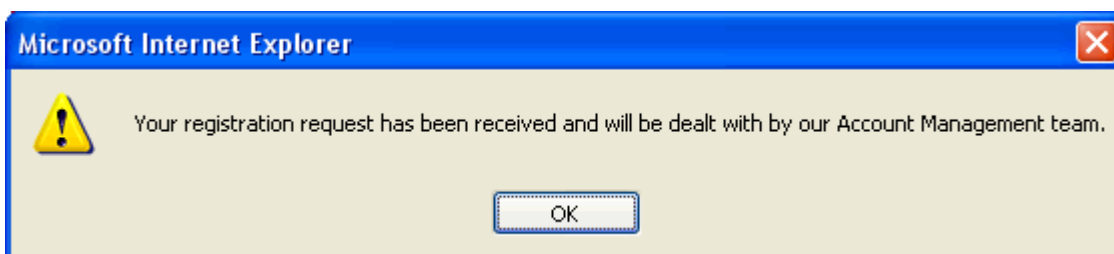
I agree with the T's & C's :

 <input type="checkbox"/>	 <input type="checkbox"/>	 <input checked="" type="checkbox"/>
 <input type="checkbox"/>	 <input checked="" type="checkbox"/>	 <input checked="" type="checkbox"/>
 <input type="checkbox"/>	 <input type="checkbox"/>	 <input type="checkbox"/>

Please click the three squares.

| [T's & C's](#) | [Privacy Policy](#)

- You will then get a pop-up message advising you that a member of the CMS Sales team will contact you regarding your request. See Below.



- You will also receive a confirmation email to the address specified on the registration form.

Guest User Access

1. Guests can log into the Configurator as a “guest user” which will allow them to configure a machine without requiring a Crane Merchandising Systems account number. This will then send the order details through to the Sales team who will contact the user to discuss their requirements.

Login

Existing Account Holders
 Guest Users

Name :

Email :

Phone No :

[Click here to fill out an online account application form](#)

Forgotten Password?

Please enter your email address and click enter and we will reset your password and send it to your email address.

Email Address :

Forgotten Password

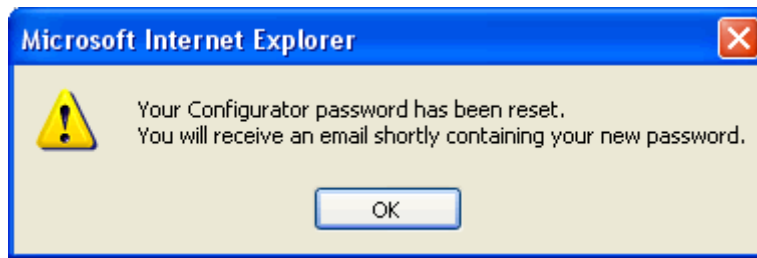
1. Enter your email address that you used for registration into the box (below) and select enter.

Forgotten Password?

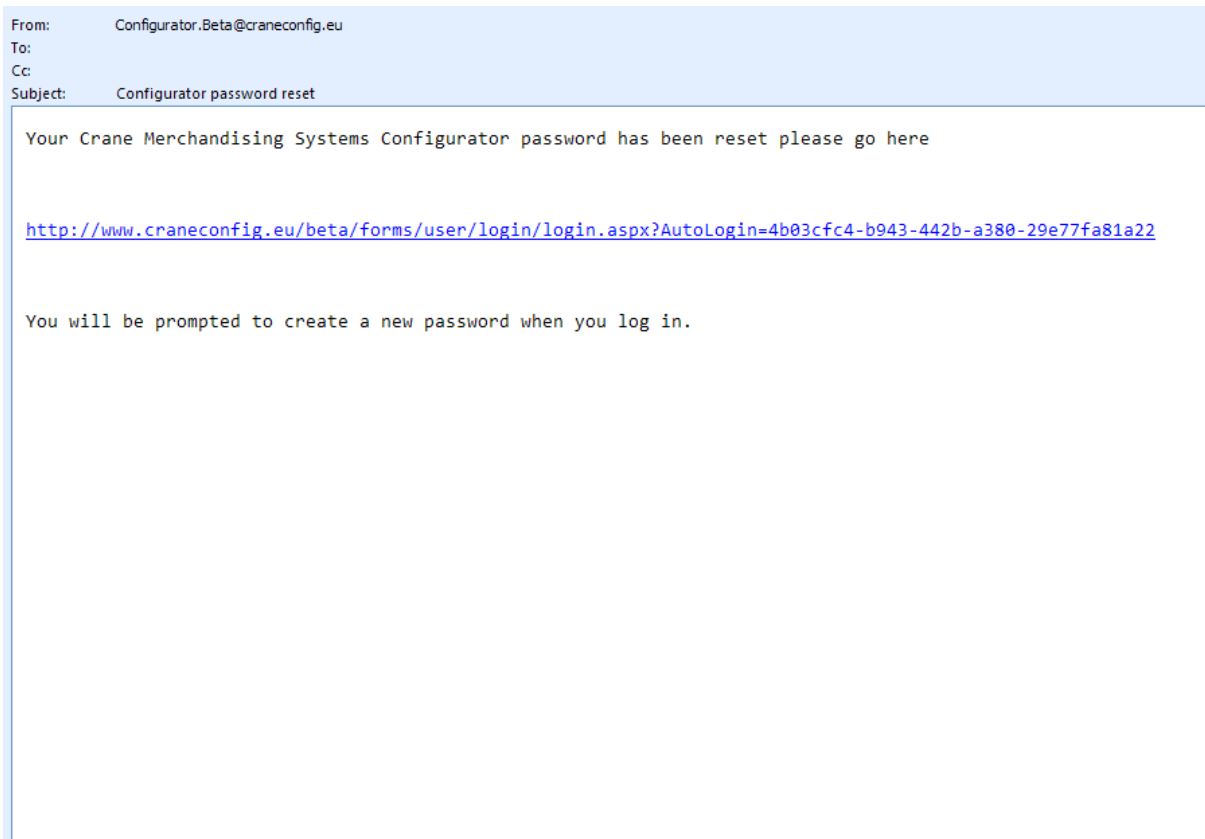
Please enter your email address and click enter and we will reset your password and send it to your email address.

Email Address :

2. You will see the following pop-up box: Click OK.



3. You will receive an email message (below) containing a link which will take you to the change password page.



4. Click on the link in the email and you will be taken to the "change password page" (overleaf).

Please Enter a New Password

New Password :

Repeat Password :

Please Enter a New Password

Please create a strong password consisting of a minimum of 6 characters preferably with mixed case letters, numbers, and special characters (@,!,? etc)

5. Enter a new password into the boxes and try to make your password as strong as possible for security reasons. We have included a strength gauge to assist with this. Click on the change password button.

Please Enter a New Password

New Password :

Repeat Password :

Your Password is Strong.

Please create a strong password consisting of a minimum of 6 characters preferably with mixed case letters, numbers, and special characters (@,!,? etc)

6. You will now be redirected to the machine selection area.